

COCHAIRS:

Yvonne Y. Chen, University of California, Los Angeles, CA

Sergio Quezada, University College London (UCL) Cancer Institute, London, England

Robert D. Schreiber, Washington University School of Medicine in St. Louis, St. Louis, MO

Fernando Vidal-Vanaclocha, The George Washington University, Washington, DC

FRIDAY, OCTOBER 18

Registration

3-8 p.m. | American Ballroom Foyer

Welcome and Opening Keynote Lecture

6:30-7:30 p.m. | America Ballroom North | CME Eligible

6:30-6:35 Welcome and Introduction of Keynote Speaker
Yvonne Y. Chen, University of California, Los Angeles, CA

6:35-7:15 Metabolic adaptation of T cells in cancer
Susan M. Kaech, Salk Institute for Biological Studies, La Jolla, CA

7:15-7:30 Discussion / Q&A

Opening Reception

7:30-9:30 p.m. | America Ballroom South

SATURDAY, OCTOBER 19

Continental Breakfast

7-8 a.m. | American Ballroom Foyer

Plenary Session 1: Good and Bad CD4 T cell Help

8-10:05 a.m. | America Ballroom North | CME Eligible

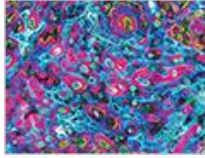
Session Chair: Sergio Quezada, University College London (UCL) Cancer Institute, London, England

8-8:05 Introduction
Sergio Quezada

8:05-8:25 Cancer biomarker defining the subset of HPV16+ head and neck cancer patients benefiting from therapeutic vaccine combination with anti-PD-1
Cornelis JM Melief, ISA Pharmaceuticals, Oegstgeest, Netherlands

8:25-8:35 Discussion / Q&A

* - short-talk from proffered abstract



- 8:35-8:55 Treg targeting at the interface of adaptive and innate immunity-targetable bad help
Sergio Quezada
- 8:55-9:05 Discussion / Q&A
- 9:05-9:25 The complex roles of CD4⁺ T cells in responses to therapeutic neoantigen-specific cancer vaccines
Robert D. Schreiber, Washington University School of Medicine in St. Louis, St. Louis, MO
- 9:25-9:35 Discussion / Q&A
- 9:35-9:45 Distinct CD4⁺ T cell subpopulations as predictive biomarkers for anti-PD-1 and chemotherapy response in advanced NSCLC*
Kenneth J. Gollob, PI, Sao Paulo, Brazil
- 9:45-9:50 Discussion / Q&A
- 9:50-10:05 Panel Discussion

Break

10:05-10:25 a.m. | American Ballroom Foyer

Plenary Session 2: Mass Spectrometry / MHC

10:25 a.m.-12:15 p.m. | America Ballroom North | CME Eligible

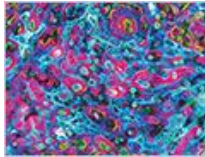
Session Chair: Michal Bassani-Sternberg, University of Lausanne, Lausanne, Switzerland

- 10:25-10:30 Introduction
Michal Bassani-Sternberg
- 10:30-10:50 Using FAIMS to improve detection of tumor neoantigens
Cheryl Lichti, Washington University School of Medicine in St. Louis, St. Louis, MO
- 10:50-11 Discussion / Q&A
- 11-11:20 Dumpster-diving into the cancer degradome
Yifat Merbl, Weizmann Institute of Science, Rehovot, Israel
- 11:20-11:30 Discussion / Q&A
- 11:30-11:50 Immunopeptidomic-driven exploration of the tumor antigenic landscape
Michal Bassani-Sternberg
- 11:50-12 Discussion / Q&A
- 12-12:15 Panel Discussion

Lunch on Own/Free Time

12:15-2:15 p.m.

* - short-talk from proffered abstract



Plenary Session 3: T-cell Engineering / Cellular Therapy

2:15-4:25 p.m. | America Ballroom North | CME Eligible

Session Chair: Yvonne Y. Chen, University of California, Los Angeles, CA

- | | |
|-----------|--|
| 2:15-2:20 | Introduction
Yvonne Y. Chen |
| 2:20-2:40 | Engineering multi-pronged CAR-T cell therapy for solid tumors
Yvonne Y. Chen |
| 2:40-2:50 | Discussion / Q&A |
| 2:50-3:10 | Utilizing insights from signaling biology to engineer CAR T cells
Robbie G. Majzner, Dana-Farber Cancer Institute, Boston, MA |
| 3:10-3:20 | Discussion / Q&A |
| 3:20-3:40 | Fourth generation CAR-Tregs
Megan Levings, BC Children's Hospital Research Institute, Vancouver, BC, Canada |
| 3:40-3:50 | Discussion / Q&A |
| 3:50-4 | Competition for dendritic cells limits engineered TCR-T cell activation in tumor-draining lymph nodes and impairs synergy with PD-L1 blockade*
Sam Nutt, Fred Hutchinson Cancer Center, Seattle, WA |
| 4-4:05 | Discussion / Q&A |
| 4:05-4:25 | Panel Discussion |

Cancer Immunology (CIMM) Working Group Session: Novel Approaches in Antigen Target Discovery

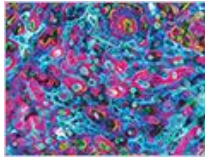
4:30-5:30 p.m. | America Ballroom North | CME Eligible

Session Chair: Catherine J. Wu, Dana-Farber Cancer Institute, Boston, MA

- | | |
|-----------|---|
| 4:30-4:45 | Genomic and immunoproteomic approaches for neoantigen discovery
Catherine J. Wu |
| 4:45-5 | Decoding the autoantibody reactome in cancer immunotherapy
Aaron Ring, Fred Hutchinson Cancer Center, Seattle, WA |
| 5-5:15 | Functional decoding of anti-tumor T cell immunity using genetic screens
Wouter Scheper, Netherlands Cancer Institute, Amsterdam, Netherlands |
| 5:15-5:30 | Panel Discussion |

Poster Session A / Reception

* - short-talk from proffered abstract



5:30-7:45 p.m. | America Ballroom South

Evening off / Dinner on own

7:45 p.m.

SUNDAY, OCTOBER 20

Continental Breakfast

7-8 a.m. | American Ballroom Foyer

Plenary Session 4: Immune Checkpoint Expression Profiles and Therapeutic Combinations

8-9:40 a.m. | America Ballroom North | CME Eligible

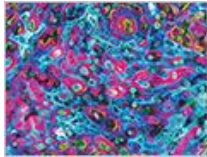
Session Chair: Fernando Vidal-Vanaclocha, The George Washington University, Washington, DC

- | | |
|-----------|--|
| 8-8:10 | Introduction / Distinct immune checkpoint gene signatures of breast cancer subtypes with and without HER2-regulated stromal cell genes
Fernando Vidal-Vanaclocha |
| 8:10-8:30 | Rational immunotherapy approaches based on the tumor glycolytic state
Roberta Zappasodi, Weill Cornell Medicine, New York, NY |
| 8:30-8:40 | Discussion / Q&A |
| 8:40-9 | PD1-IL2v: PD-1-Cis IL-2Rbg agonism yields better T cell effectors from stem-like CD8+ T cells
Laura Codarri Deak, Roche Innovation Center, Zurich, Switzerland |
| 9-9:10 | Discussion / Q&A |
| 9:10-9:20 | A TROP2/Claudin program mediates immune exclusion to impede checkpoint blockade in breast cancer*
Bogang Wu, Massachusetts General Hospital Cancer Center, Harvard Medical School, Boston, MA |
| 9:20-9:25 | Discussion / Q&A |
| 9:25-9:40 | Panel Discussion |

Break

9:40-10:15 a.m. | American Ballroom Foyer

* - short-talk from proffered abstract

**Plenary Session 5: Vaccines**

10:15 a.m.-12:20 p.m. | America Ballroom North | CME Eligible

Session Chair: Robert D. Schreiber, Washington University School of Medicine in St. Louis, St. Louis, MO

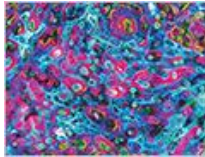
In honor of Dr. Jeffrey S. Weber

10:15-10:20	Introduction Robert D. Schreiber
10:20-10:40	New results on SLP-based neoantigen-targeting vaccines Catherine J. Wu, Dana-Farber Cancer Institute, Boston, MA
10:40-10:50	Discussion / Q&A
10:50-11:10	Personalized RNA vaccines for pancreatic cancer Vinod P. Balachandran, Memorial Sloan Kettering Cancer Center, New York, NY
11:10-11:20	Discussion / Q&A
11:20-11:30	Nous-209 off-the-shelf vaccine targets neoantigen mutations well represented both in primary and metachronous incident CRCs from Lynch syndrome patients* Lorenzo De Marco, Nouscom Srl, Rome, Italy
11:30-11:35	Discussion / Q&A
11:35-11:45	Personalized RNA neoantigen vaccines induce long-lived CD8+ T effector cells in pancreatic cancer* Pablo Guasp, Memorial Sloan Kettering Cancer Center, New York, NY
11:45-11:50	Discussion / Q&A
11:50-12	Optimally designed mRNA vaccine encoding tumor-specific antigens identified in a colorectal cancer model leads to complete tumor rejection in mice* Marie-Pierre Hardy, University of Montreal, Montreal, QC, Canada
12-12:05	Discussion / Q&A
12:05-12:20	Panel Discussion

Lunch on Own/Free Time

12:20-2:30 p.m.

** - short-talk from proffered abstract*



Plenary Session 6: Emerging Technologies, Microbiome, and Immunometabolism

2:30-4:35 p.m. | America Ballroom North | CME Eligible

Session Chair: Greg M. Delgoffe, University of Pittsburgh, Pittsburgh, PA

- | | |
|-----------|--|
| 2:30-2:35 | Introduction
Greg M. Delgoffe |
| 2:35-2:55 | Spatial transcriptomics and novel insights into the immune tumor microenvironment
Thomas F. Gajewski, University of Chicago, Chicago, IL |
| 2:55-3:05 | Discussion / Q&A |
| 3:05-3:25 | Targeting the gut microbiome for cancer immunotherapy
Giorgio Trinchieri, National Cancer Institute, Bethesda, MD |
| 3:25-3:35 | Discussion / Q&A |
| 3:35-3:55 | Leveraging metabolic reprogramming to improve cellular therapies for cancer
Greg M. Delgoffe |
| 3:55-4:05 | Discussion / Q&A |
| 4:05-4:15 | Spatial transcriptomics to profile the non-small cell lung cancer tumor microenvironment and identify novel predictive biomarkers for checkpoint blockade*
Christina Cho, Yale University School of Medicine, New Haven, CT |
| 4:15-4:20 | Discussion / Q&A |
| 4:20-4:35 | Panel Discussion |

Break

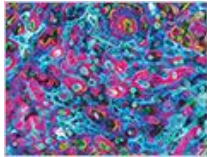
4:35-4:50 p.m. | American Ballroom Foyer

Keynote Lecture

4:50-5:50 p.m. | America Ballroom North | CME Eligible

- | | |
|-----------|--|
| 4:50-4:55 | Introduction of Keynote Speaker
Robert D. Schreiber, Washington University School of Medicine in St. Louis, St. Louis, MO |
| 4:55-5:35 | Large-scale mapping of TCR-pMHC interactions
Ton Schumacher, Netherlands Cancer Institute, Amsterdam, Netherlands |
| 5:35-5:50 | Discussion / Q&A |

* - short-talk from proffered abstract



Poster Session B / Reception

6-8:15 p.m. | America Ballroom South

Evening off / Dinner on own

8:15 P.M.

MONDAY, OCTOBER 21

Continental Breakfast

7-8 A.M. | American Ballroom Foyer

Plenary Session 7: Myeloid and NK Cells

8-9:50 a.m. | America Ballroom North | CME Eligible

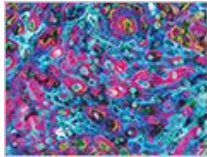
Session Chair: Matthew Spitzer, University of California, San Francisco, CA

- | | |
|-----------|--|
| 8-8:05 | Introduction
Matthew Spitzer |
| 8:05-8:25 | Retroviral mimics costimulate TLR7/8/9 for enhanced activation of dendritic cells and myeloid cells to induce anti-tumor CD8+ T cells
Arthur M. Krieg, University of Massachusetts Chan Medical School, Needham, MA |
| 8:25-8:35 | Discussion / Q&A |
| 8:35-8:55 | Aire-expressing tumor-associated macrophages promote cancer immune evasion
Matthew Spitzer |
| 8:55-9:05 | Discussion / Q&A |
| 9:05-9:15 | Oncogenic Ras dosage alters senescent immune response and influences tumour initiation* |
| | Haoran Zhu, CRUK Cambridge Institute, Cambridge, England |
| 9:15-9:20 | Discussion / Q&A |
| 9:20-9:30 | AXL limits the mobilization of cholesterol to regulate dendritic cell maturation and the immunogenic response to cancer* |
| | Meriem Belabed, Icahn School of Medicine at Mount Sinai, New York, NY |
| 9:30-9:35 | Discussion / Q&A |
| 9:35-9:50 | Panel Discussion |

Break

9:50-10:05 a.m. | American Ballroom Foyer

* - short-talk from proffered abstract



Plenary Session 8: Clinical and Biological Intersection

10:05 a.m.-12:15 p.m. | America Ballroom North | CME Eligible

Session Chair: Fernando Vidal-Vanaclocha, The George Washington University, Washington, DC

- | | |
|-------------|--|
| 10:05-10:10 | Introduction
Fernando Vidal-Vanaclocha |
| 10:10-10:30 | Leveraging the immune system for pancreatic cancer interception in high-risk cohorts
Neeha A. Zaidi, Johns Hopkins Medicine, Baltimore, MD |
| 10:30-10:40 | Discussion / Q&A |
| 10:40-11 | Integrating clinical and laboratory research to identify mechanisms of response and resistance to immune checkpoint therapy
Padmanee Sharma, The University of Texas MD Anderson Cancer Center, Houston, TX |
| 11-11:10 | Discussion / Q&A |
| 11:10-11:30 | Diffuse large B-cell lymphoma and neurotoxicity following CAR-T cell immunotherapy: Contributing factors and blood-brain barrier impairment biomarkers
Fernando Vidal-Vanaclocha |
| 11:30-11:40 | Discussion / Q&A |
| 11:40-11:50 | Fc-optimized agonistic CD40 antibody induces tumor rejection and systemic antitumor immunity: From the bench to the bedside and back*
Polina Weitzenfeld, The Rockefeller University, New York, NY |
| 11:50-11:55 | Discussion / Q&A |
| 11:55-12:15 | Panel Discussion |

Departure

12:15 p.m.

* - short-talk from proffered abstract